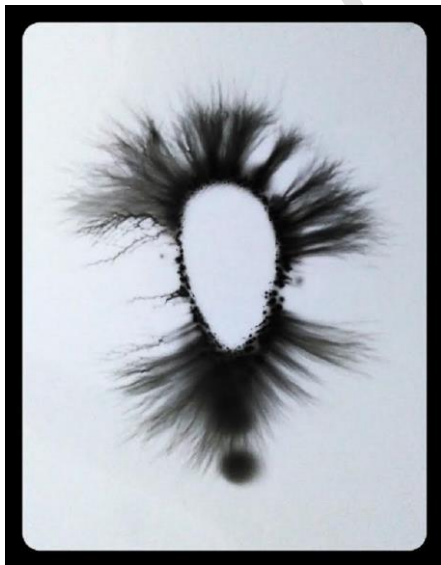


SAN BAO
Energetic practice
for
adults and children

**Disruptions in the energy balance (after vaccination),
revealed by kirlianphotography,
Energy Emission Analysis according to Peter Mandel**



H.W.J.J. Inge Cox
België: Eeuwfeeststraat 2
3400 Ezemaal (B)
Tel: 0032 16 78 26 86

Nederland: Julianaplein 9
6049 BS Herten (NL)
Tel: 0031 6 287 63 631
info@sanbao.be
www.ingecox.com

Disruptions in the energy balance (after vaccination), revealed by kirlianphotography, Energy Emission Analysis according to Peter Mandel



Kirlianphotography makes energetic disturbances in the body visible.

Kirlianphotography, the energy Emission Analysis according to Peter Mandel is an energetic analysis method which provides us with information about the preservation of human health and for the recognition of the challenge against diseases and pain. Peter Mandel is the founder of the Mandel-Institute of Esogetic where kirlianphotography holds an important place in human health from a holistic view on energy level. Philosophy, traditional knowledge, research and empirical discoveries made sure that Peter Mandel and his team could develop a system. This method is called the energy Emission analysis (EEA).

Introduction

We use the kirlianphotography as an analytical method for the quantity and intensity light that the body emits, our life energy, captured on a sheet of photo paper. This is done by a print of the fingertips and toes, the place where the start and end points of the energy lines, the meridians, of the body are.

The information and energy flow of organs and body systems which become visible on the Kirlian photograph give us information about the preservation of human health, recognition for the approach of possible support in diseases and pain, and the ability to determine the cause of a complaint.

We want to place the person in the center and give him information from the kirlianphotography, that is based on the laws of nature, the whole creation, so that the person can take his sole responsibility and can make a choice in respect to private health and healthy living. That is why it is important that we don't only look at symptoms, but also at the causes. Complaints associated with all layers of the body, conscious and unconscious, are an important item to penetrate the core.

The phenomena in a Kirlian photograph can be interpreted based on cause and effect. Traditional Chinese Medicine and other traditional philosophies which emanate from the whole person are very helpful in this. Important is that we don't read individual phenomena from the photo, but connect these phenomena logical so that we get a clue about the place of least resistance in the body. Here are 3 points of interest:

1. The information is based on the individual person. Discover the uniqueness of the person.
2. Energy ensures that individual information is transmitted and leaves visible traces in organ structures and body systems.
3. From the points mentioned above it is possible to interpret the condition of the incriminating sectors within the body. This means that we can - from the spirit-level (information) through the soul-level (energy) - draw conclusions about the human body (matter). Because we judge from the trinity matter, energy, and information.

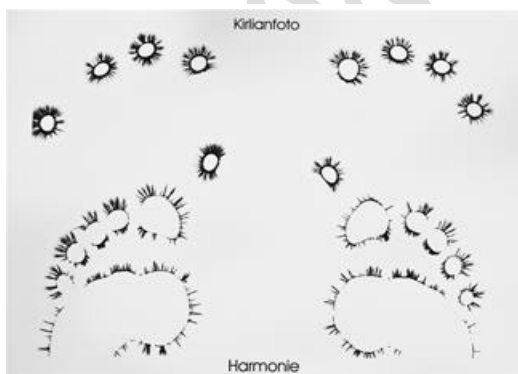
Kirlian photograph assessment takes place on three levels:

1. Information
2. Energy
3. Matter

These 3 levels are interpreted first separately and then connected to a total assessment with regards to the complaint/response of the body.

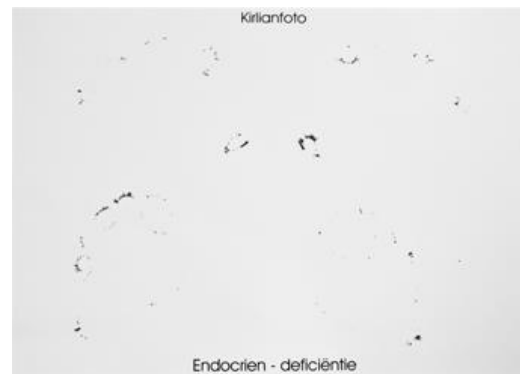
The radiation quality indicates whether we are dealing with a functional disturbance in which the hormonal-neuro-vegetative system responds, endocrine. Or toxic, if there is an inflammatory response. Or degenerative, when the life dynamics is lost. Sectors where we find this radiation phenomena on the Kirlian photograph give further meaning which areas are disrupted and the consistency between those areas.

The 4 energetic basic phases within the kirlian photography: harmony and EDT phases



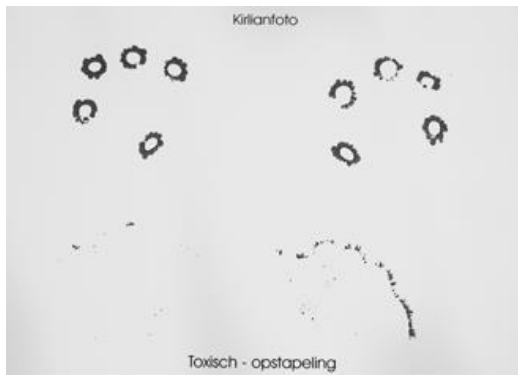
The harmony-phase:

optimal balance between body, soul and spirit



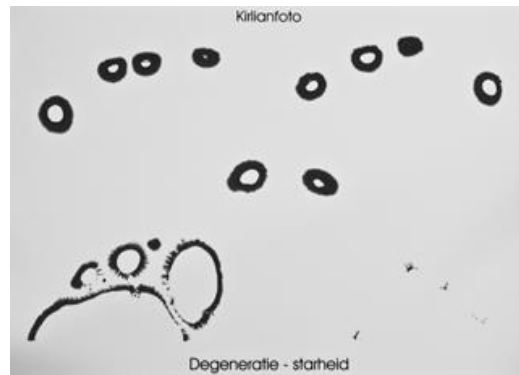
The endocrine phase::

decreased energy, the body can no longer function optimally



The toxic phase:

reaction of the body, with accumulation effect of reduced elimination



The degenerative phase:

energetic rigidity in structures and in the information processing of the body

This analysis method does not replace a regular diagnosis but serves as addition, from the cause of the problem with the intention to recover the body and mind based on the EDT analysis according to Peter Mandel. (format according to Endocrine - Toxic - Degenerative analysis)

Location immunity on the Kirlian photograph

In the Chinese philosophy immunity is related to the element metal or air, which contain the organs lungs and colon. The radiation field of the thumbs is related to immunity which is connected to lungs and lymph. This we can bring in connection with the zone of the colon in the index finger. Do we find a load here? A load can only take place when there is a weakness in the system.

CASE STUDY 1 – kirlian photograph-analysis

From the research "the influence of vaccination on the immune system and the energy system" in my practice, I worked out the following practical example for clarification.

Example: Kirlian photograph 1 for vaccination.

DPT (Diphtheria, Petussis, Tetanus) + POLIO vaccine on 5 year old girl.



Example: Kirlian photograph 2 after vaccination.



A weak radiation on the location of the feet is due to reactions from the reaction area of the fingers. Two indications are important here:

1. Sleep rhythm disruptions
2. General immunological weakness

The Kirlian photograph after vaccination lets see clearly less print of the feet/toes. However, we have to pay attention to the relationship between the left and right foot. The left foot shows information about the NON-REM phase, the possibility of regeneration of the body during sleep. The right foot gives information about the REM phase, the possibility of regeneration of the emotional brain and the processing of the things we have experienced. In this phase we make contact with the deeper layers of our consciousness.

Information and soul level

To understand all the information from a person, it is important that we find the place of least resistance. The causative factor, in this study a vaccine, is some form of information provided through the energetic principle on the matter (= body) acts.

The reaction is connected with the existing information in our body which is connected with the impulses of our soul.

Exactly where we encounter the disturbances after vaccination also gives us information on backgrounds of the person/child.

The pressure phenomena that result, represent the response in the matter which is connected to the information (= spirit level) and energy (= soul level).

In the thumbs, the switching station of the reaction, we find the harmonic or disharmonic flow of life information that is reflected in the phenomena we observe at this location. In the left thumb we can associate the locations with the disturbed functions of organs. From the thumbs there can also be found an answer with the connection of phenomena off the prior fingers.

Can Vaccination be seen as a stress situation to the body?

Yes, on the Kirlian photograph, it is shown that there is a pressure on the hormonal system which is referred to by the left ring finger. The load in the form of black polka dot, corresponds to the area of the pituitary, hypothalamus, pancreas and adrenal glands.

Also the left index finger shows that the nervous system reacts, because we see a load of the medulla oblongata. Further loads we also see in the left ring finger correlated with the upper part of the neck and the colon which is connected to the load in the thumbs and the bottom of the left and right little finger. We can deduct from this that there is also a reaction, taking place within the lymphatic system.

Through this approach we can see how the complaints develop themselves consider the uniqueness of the client.

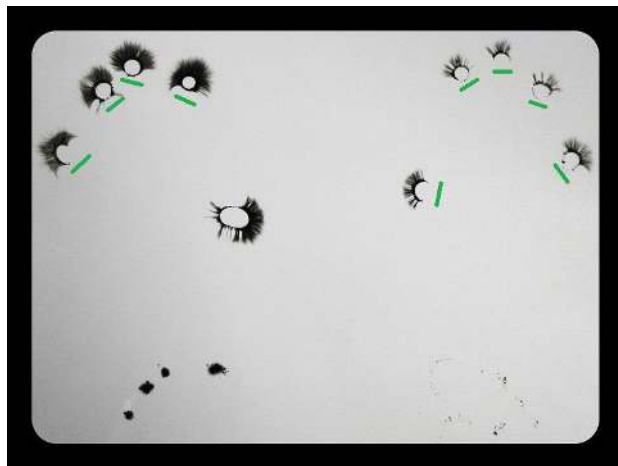
The Kirlian photograph shows that a load began to form at the height of the back (unconscious) and front (aware) of the thumbs. These are important regions that have a relationship on physical level with the lymph system and at a soul and spirit level by bringing the inside information to the outside.

At the left ring finger we see a pressure phenomenon, a pressure below and above in which we see rather an oval shape instead of a round shape. This is called a vertical axis. Here come the psyche and endocrine together.

CASE STUDY 1 – kirlian photograph-analysis detail for vaccination

Kirlian photograph 1: a Kirlian photograph of the fingertips and toes prior to vaccination with an endocrine radiation quality which indicates light failure. Powerful appearance in the areas at the top and loss of energy in the areas of the lower abdomen and lymph from the breast region. The difference between the thumbs shows an imbalance in the resistance of the child.

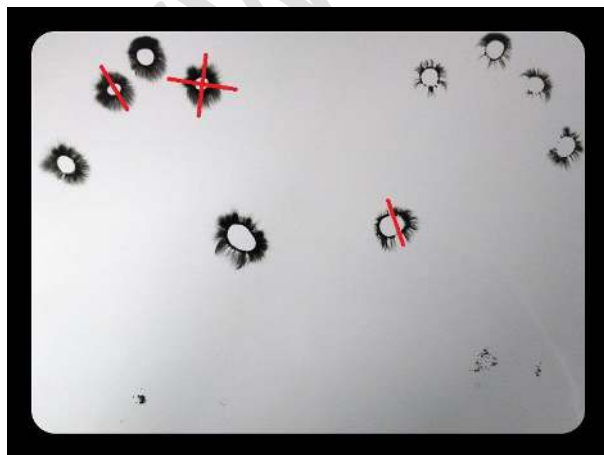
The green lines shows the deficiency.



After vaccination

Kirlianfoto2: the Kirlian photograph of the fingertips and toes leave a shock reaction after vaccination, a reactive power of the body. In its totality, there has been a toxic reaction (black dots), with a pressure on the hormonal system. Zones that were more indicated as an deficiency in the first picture are now involved in the reactive process and as a result, clearly visible on the second photo. The thumbs are more visible, especially the right thumb, but there remains an opening halfway up and down the thumbs which indicates weakened immune system. The big difference between the left and right thumb indicates a laterality.

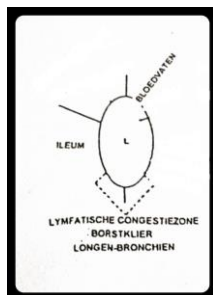
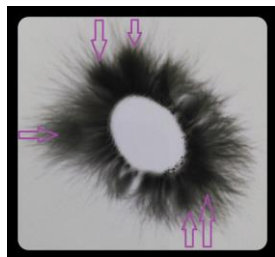
The red lines indicate the pressure axes with the left ring finger and left index finger and weakened immunity in the right thumb.



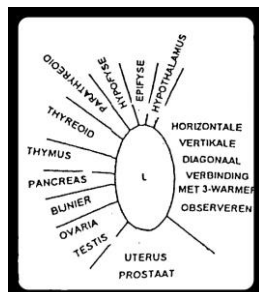
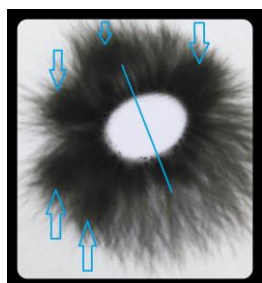
Reactions in the individual regions

Listed below are the comments explained that took place within the individual regions.

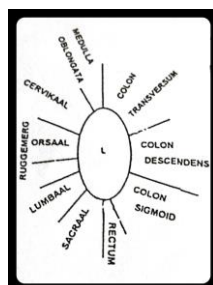
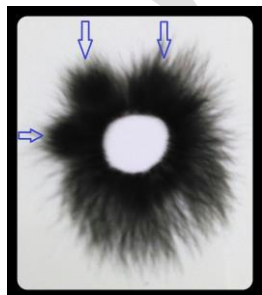
The left pink in image after vaccination. The violet arrows indicate that both, at the top and at the bottom of a load is, discernible in the form of black dots. The zone at the top of the pink shows that there was a reaction taking place within the blood vessels, and at the bottom of the pink, the zone which refers to the lymph region of the breast



In the ring finger we find the location of the endocrine system. After vaccination the zones of the ring finger with a bold black scoop, toxin, let see where the reaction took place. The incriminating zones are: hypothalamus, pituitary, thymus, pancreas, adrenal glands and ovaries.



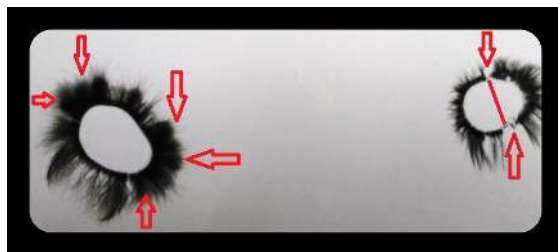
The index finger represents the location of the medulla spinal cord, the spinal column and the colon. The image of the index finger after vaccination shows that there is a tension forming from the medulla oblongata on, (= the medulla oblongata that brain stem connects to the spinal cord) within the nervous system and there is a load formed at the height of the neck and thoracic vertebrae, indicated by the light blue arrows. The zone of the colon has an overall load, characterized by the thick black border on the right side of the index finger.



The thumbs in the image for the vaccination, where the re thumb shows a deficiency of the immune system, indicated by the green arrow.



The thumbs in image after the vaccination. The Red arrows at the left thumb refer to the toxins that are released in the region of the frontal-nasal cavities, throat and jaw region and the lymph from the neck. The Red arrows with the red line at the right thumb indicates an opening that is present and that is related to the weakened immune system, connecting with lungs and colon.



Connections between the reaction zones.

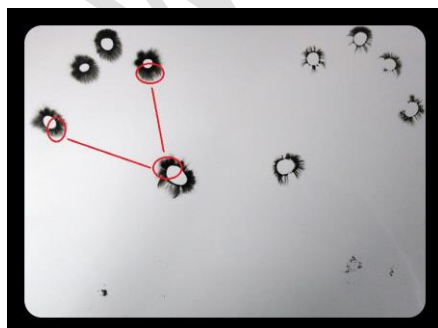
If we perceive the connection between the reaction in the left little finger, left index finger and the thumb, this shows the reaction unfolds within the entire lymphatic system. This is an important indication that the entire lymphatic system is involved in the reaction process after vaccination.

The Red ovals indicate the following three areas:

Lymph throat area – relationship zone thumbs

Lymphatic breast area – relationship zone blink

Lymph abdomen area – relationship zone index fingers

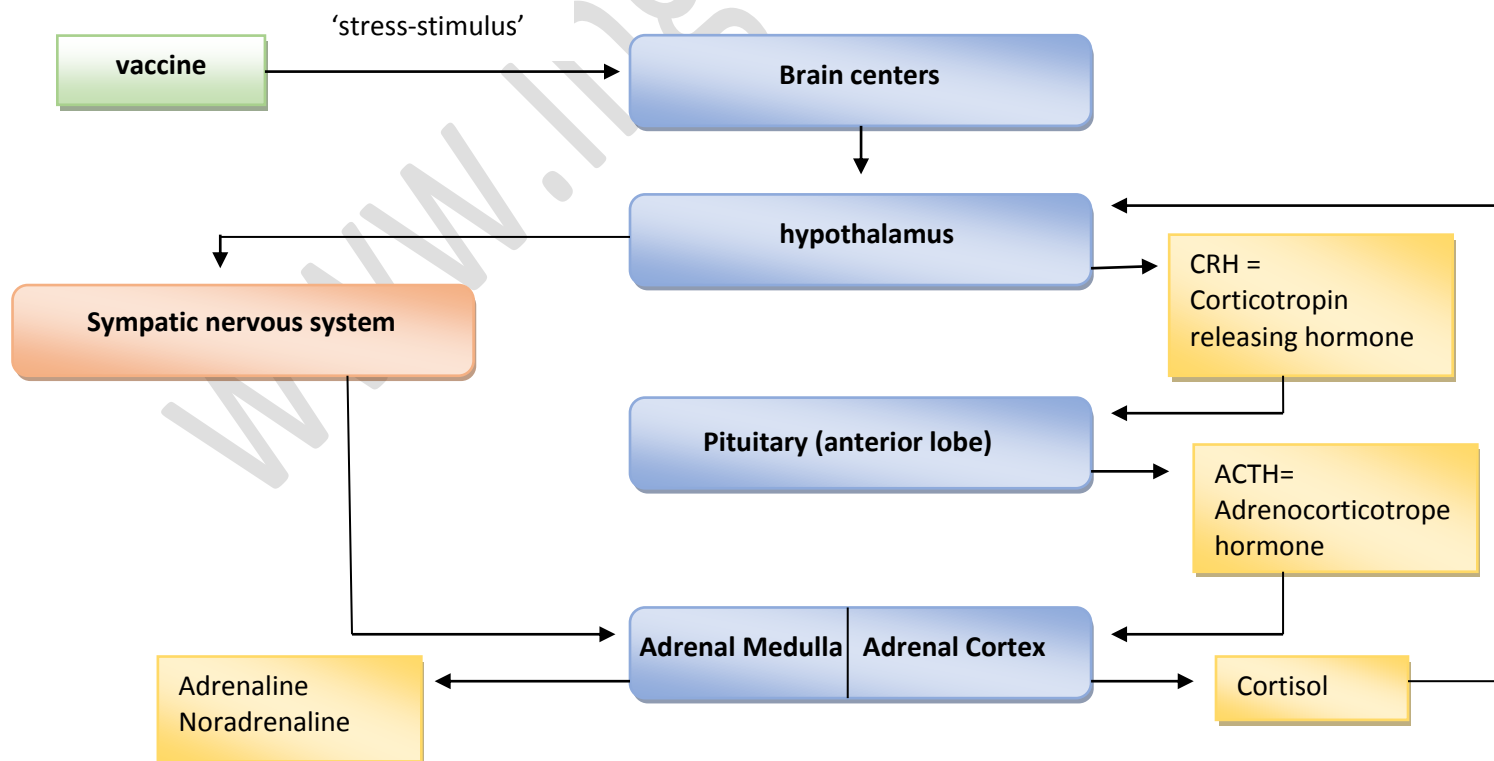


The blue ellipses indicate there is a tension arising in the head. The blue lines indicate the axes to pressure that have risen within the spinal system and the hormonal system. As a result, the diaphragm cannot fully relax, there is a tension continuing to exist in the solar plexus (3rd chakra), that's why there are no footprints on the Kirlian photograph. A good connection between abdomen (feeling) and head (thinking) gives a good information flow in the body and translates into clear footprints.



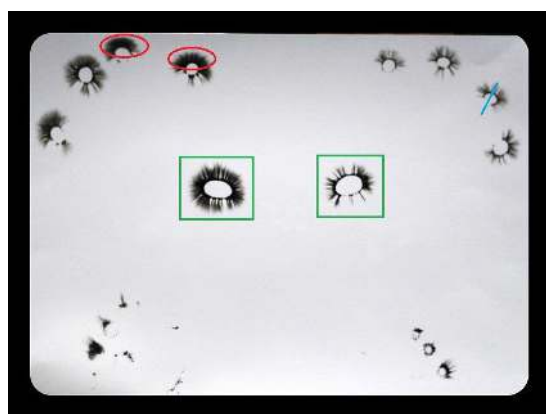
Relationship Kirlian photograph and physiological functioning of the body

Administering a vaccine turns out to be a stress stimulus for the body. We can see this in the reaction on the Kirlian photograph. If we are going to look where exactly the reaction takes place, we would be able to bring this about in a schedule in which we see the physiological functioning between the reaction within locations on the Kirlian photograph.



CASE STUDY 1 - kirlian photograph-analysis 2 weeks after vaccination

Giving a homeopathic remedy before (and possibly also after) vaccination has a positive influence on the energy system of the child. Especially the zone, the thumbs with the Green framework, related to the immune system shows a nice powerful energy look after 2 weeks. The ring fingers have a relationship with the endocrine system, in which the left ring finger directly governs after vaccination, causal. The right ring finger reacts only 2 weeks after vaccination, the result indicated by the light blue line. This means that the causal side in the meantime can regulate, but the result side has now shown a visible pressure. The load on the head indicated by the Red ovals around the top of the left middle finger and index finger are reduced in comparison with the period immediately after vaccination. To the last two phenomena there can be given some more attention. The toe prints are more closed; this indicates that the exchange of information between head and abdomen has become better, but is still not optimal.

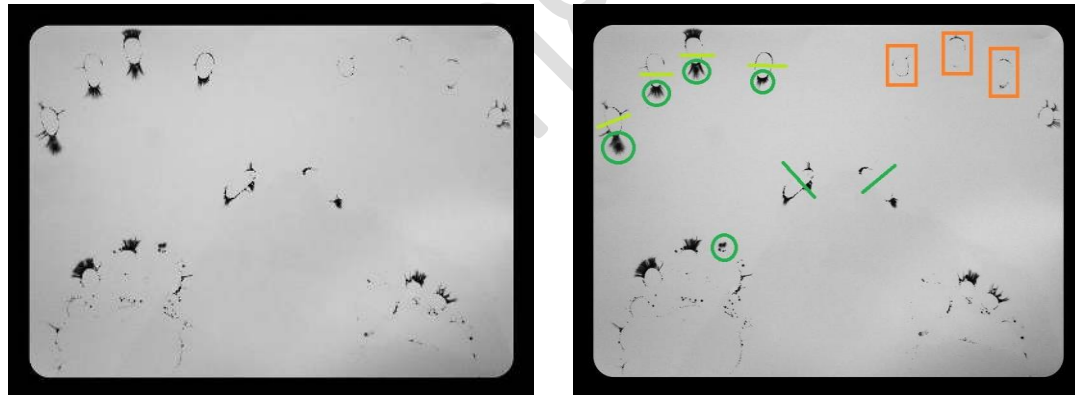


CASE STUDY 2 - kirlian photograph-analysis detail before vaccination

Human Papillomavirus vaccine on 13 year old girl.

Kirlian photograph 1: a Kirlian photograph of the fingertips and toes before vaccination with a combined radiation quality, endocrine rigidity with some toxic phenomena. This indicates an insufficiency and at the same time there is a rigidity, resulting in insufficient energy to release the life information of the person and to let flow the individual program. The oval fingers indicate a power loss in the center of the body. With children who are high sensitive this is an image which returns because they are more sensitive to impressions from the outside and they need more time to process this. The openings at both thumbs show a disruption (either positive or negative) with regards to the immune system of the child.

The green lines indicate the disruption/ weakening of the immune system. The green circles depicted at the bottom of the left fingertips show the toxic phenomena on the lower body and lymph/chest area. The green circle, top left big toe, shows a load related to an allergy that is present. The Orange rectangles show the area where the rigidity is highest, which you can see by the absence of radiation.



After vaccination

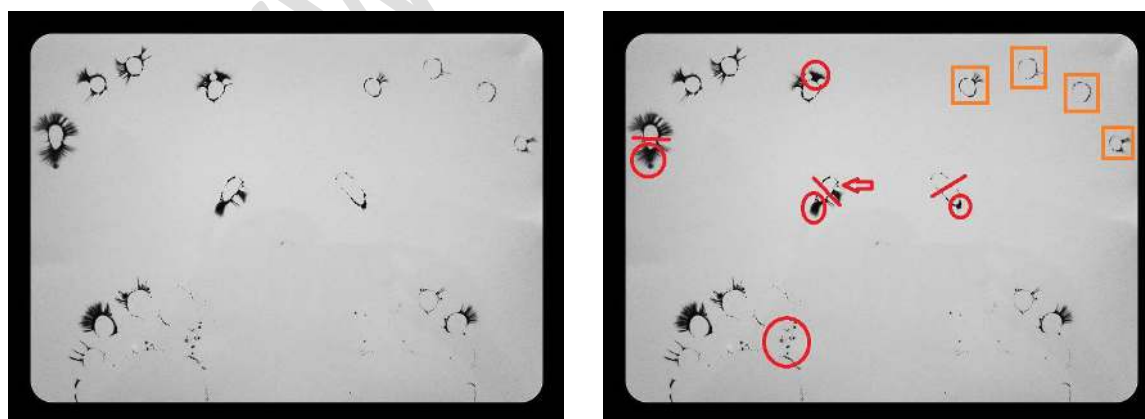
Kirlianfoto2: the Kirlian photograph of the fingertips and toes after vaccination reveals a reaction: the pressure within the lymphatic system has increased, visible through the red lines. There's still a rigidity in the flow of information with some toxic reactions (black dots), in the region of the neck and chest, and also the area of the liver and spleen. The toxic load that has increased at the same time, shown by the red circles. The reactive power of the body takes place mainly in the lymphatic system and there's tension-building in its totality. This is arguably because form of most fingers have changed, from oval to more compact round, with less beam pattern, indicated by the Orange rectangular shapes. The overall picture still shows that there is rigidity within the flow of information with some toxic reactions (black dots), in the area of the neck and chest lymph and liver, spleen zone. The nervous system is also involved in the process and as a result become visible at the top of the left index finger, energy loss zone medulla oblongata and a load in the large intestine. Zones that are more indicated by a deficiency in the first picture are now involved in the reactive process and as a result, clearly visible on the second photo. The opening up and down halfway through the thumbs still shows a weakened immune system. The big difference between the left and right thumb indicates that there is laterality. The result of this process we can find in the toe prints. The thick toes are now lighter which indicates a loss of energy in relation to the liver and spleen. The load under the big toe to the left shows that toxins are released. The red lines indicate the pressure axes with the left little finger and weakened immunity shown in the thumbs.

The red arrow indicates a pressure-axe with the left thumb which has a relationship with the liver.

The red circles at the fingerprints show the toxic load of the lymph, represented in the thumbs and left little finger and at the left index finger there is a connection with the large intestine.

The red circle under the big toe shows the load in the liver, pancreas and throat area.

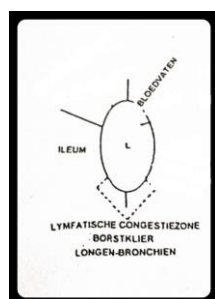
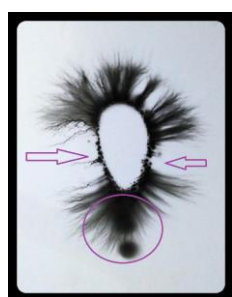
The Orange rectangles refer to rigidity in the flow of information.



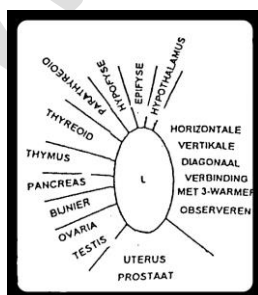
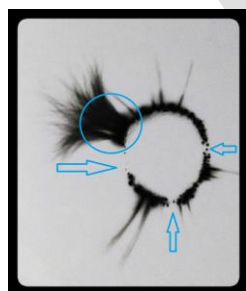
Reactions in the individual regions

Listed below are the comments explained which took place within the individual regions.

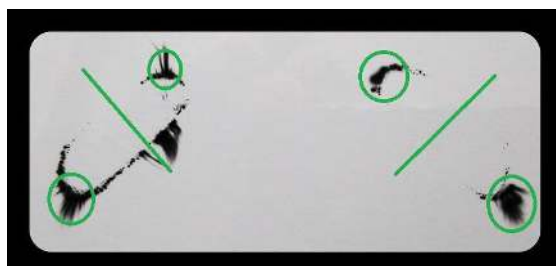
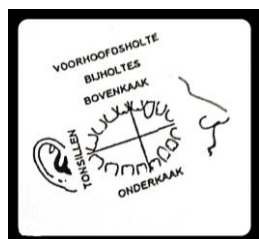
The left pink in image after vaccination. The violet arrows indicate that at the height of the chest a pressure load is within the lymph system and the small intestine, reflected by the narrower spout down. There is a more powerful look at the top, in the region of blood vessels, but the area of the small intestine is characterized by a loss of energy, also indicated by the violet arrows. The zone at the bottom of the left little finger shows that there is also a reaction that took place within the lymphatic system at the level of the chest. This reaction was present prior to vaccination and has expanded afterwards.



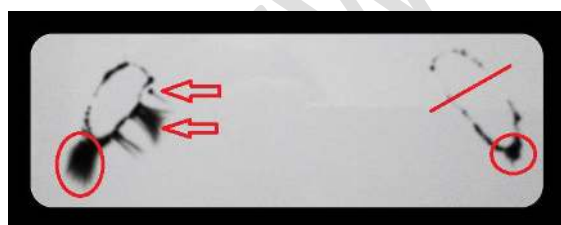
The locations of the endocrine system and the connections with the deep consciousness we can find in the left ring finger. The turquoise circle indicates a load in the area of the thymus. The thymus gland produces hormones (thymosin) which stimulate the immune system and thus is an important organ in our immune system. The arrows indicate that energy loss is still there, especially the zones: pancreatic, uterine and in the connecting to the deep consciousness.



The image of the thumbs before vaccination with the zones down, using the green circles, indicate the load in the lymph. Lymph drainage through the head to the breast does not flow enough and this shows a load in the lymph at the height of the neck region. The green circles at the top of the thumbs show a load of the creases of the side of the skull. This is the gathering place where all matters reflecting the stagnation in relation to the personal information. We see here the connection between the physical, energetic and informational flow in the body. The green lines indicate a deficiency of the immune system and this area also has a connection with the lungs and large intestine. These two organs are always involved in processes of the immune system.



The image of the thumbs after vaccination show the lymph load at the level of the neck, while the information flow in the further side of the skull is stagnating. This means that it is still more difficult in connection with personal information. There is a pressure at the left thumb at the top which has a relationship with the liver. The liver as filter body may not support enough services to completely eliminate the reaction right away.



Connections between the reaction zones.

If we perceive the connection between the reaction in the left little finger and the thumbs, this reveals that the reaction itself primarily shows within the neck and chest region of the lymphatic system. This is an important indication that the reaction after vaccination has taken place via lymphatic system.

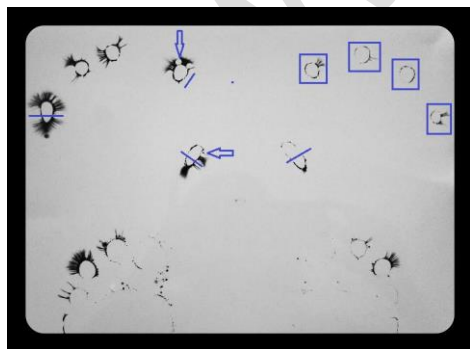
The red circles indicate the following three areas:

Lymph throat area – relationship zone thumbs

Lymphatic breast – relationship zone left pink



The blue rectangles, lines and arrows indicate the various areas of tension. Here the process with respect to the individual program lost even more dynamic, compared to prior vaccination. The blue lines indicate the axes to pressure that have arisen within the small intestine, location pink left, and the large intestine, location left index finger, and the connection between lungs and large intestine, location both thumbs. Activating the energy flow would be bringing rigid structures into movement, as a result of which the body gets the chance to regulate. Regulation both physically and on emotional level. The consequence of this is that the child can use fully its own potential to develop the personal qualities.



Conclusion:

Kirlianfotography, EEA analysis according to Peter Mandel focuses mainly on the reaction that takes place within the body and seeks to analyze the connections between the mutual reactions to a holistic vision.

Most children who have participated in the research, showed an energetic weakened immune system.

The energy system responds to vaccination.

It is important to not only pay attention to the immune system but also to the hormonal system and the nervous system.

A homeopathic remedy before and/or after vaccination gives a positive effect on the immune system.

Advice:

It is advisable first to ensure a harmonious flow of energy in the body before one is about to get vaccination. By monitoring by means of kirlianfotography / EEA analysis, it is possible to analyze the reactions which vaccination causes. It is thereby possible to support 'the weakest link', from a holistic view of the body.