

Editor:  
Förderkreis der Esogetischen  
Medizin nach Peter Mandel e. V.

Interessengemeinschaft der  
diplomierten Therapeutinnen  
and Therapeuten der  
Esogetischen Medizin/  
Farbpunktur nach Peter Mandel

IAEC – International Association  
of Esogetic Colorpuncture

in collaboration with  
ESOGETICS GmbH

# ESOGETIC LETTERS

December 2025

## “Extraordinary Meridians” and Cardinal Points – Part 3

**Förderkreis**  
*der Esogetischen Medizin*  
*nach Peter Mandel e.V.*



The greatest care has been taken in the composition of this document with regard to the accuracy of the information contained herein.

Many of our therapeutic procedures and their effects are based exclusively on the empirical knowledge of naturopathy. Medical diagnoses and courses of treatment, especially treatment methods and their effects, are highly individual and different. For this reason, a successful treatment cannot be foreseen or guaranteed. As a precautionary measure, we therefore point out that we make this clear in the content we present with the help of the subjunctive. The word "may" therefore indicates, in the sense of an assumption or presumption, a mere possibility, the existence of which is uncertain and can be described as "perhaps" or "possibly". We therefore point out that, with regard to a possible success of treatment and the suitability of a therapy, these terms should not be understood in the sense of a promise of healing.

Please always keep in mind that certain diseases and strains are less or not suitable for self-treatment. We would like to expressly point out that before self-treatment with our products, especially in the home environment, it is advisable to consult your doctor or alternative practitioner. The author and publisher of this brochure are in no way liable for damages or consequences arising from the use of this brochure.

**Förderkreis der Esogetischen Medizin  
nach Peter Mandel e.V.**

Hildastraße 8  
76646 Bruchsal  
Tel. 07251-800135

**ESOGETICS GmbH**

Hildastraße 8  
76646 Bruchsal  
Tel. 07251-8001-0  
info-de@esogetics.com  
www.esogetics.com

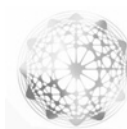
**Peter Mandel Stiftung  
für Esogetische Medizin**

Hirschmattstrasse 16  
6003 Luzern  
Tel. 041-420 58 36  
www.peter-mandel-stiftung.ch

**ESOGETICS GmbH – Niederlassung**

Hirschmattstrasse 16  
6003 Luzern  
Tel. 041-420 58 36  
info-ch@esogetics.com  
www.esogetics.com

**All materials, contributions and illustrations are protected by copyright. Use and reprint –  
even excerpts – require written permission. © Copyright by Peter Mandel +  
Internationales Mandel-Institut für Esogetische Medizin**



Dear Friends of Esogetic Medicine,

In this Esogetic Letter I am discussing the coupled point of PC 6, the point SP 4.

## SPLEEN-PANCREAS 4



### Location:

The point is located on the left and right foot slightly distally from the proximal end of the first metatarsal bone.

### Indications:

Effect on the cardiovascular system, angina pectoris, palpitations and heart pain, feeling of oppression in the thorax, digestive organs, especially in cases of loss of appetite, belching, and heartburn, which, according to Chinese medicine, are always related to disorders of the liver, such as portal vein congestion and hemorrhoids. However, the wandering pains found in rheumatic diseases are important.

Regardless of the indications given by Dr. Bachmann, I have observed that the area around SP 4 is an excellent matrix point (acupressure point) for all cerebral complaints. This is tested by applying firm pressure to this area (Lisfrank's joint line) several times in quick succession. Stress and pressure felt in the head can be released.

### Colorpuncture:

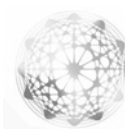
PC 6 .....Complementary Red/Green

### Induction:

PC 6 .....Gamma short, PowerNap

### Acusiniatry:

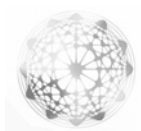
With regard to the heart, the modalities should be observed. For angina pectoris, palpitations, precordial anxiety, or even cardiac muscle spasms, I use Spascupreel (Heel) and Psychoneuroticum (Fa. Medphano Arzneimittel) as a mixture, while for general cardiovascular weakness, Infi Convallaria or Cor Loges would be used.



As an additional treatment for hepatic complaints, as well as for hemorrhoids and portal vein congestion, I use Infi Condurango or Hepar Loges.

For rheumatic complaints, I mix Rheuma Hevert with Elhapargen Magnet aktiv.

Below are some combinations that have been used successfully together with the SP 4 points at our office.



After the SP 4 treatment the following points are treated:



Regardless of whether the points are treated with acupuncture and Spascupreel, Colorpuncture with the spectral colors, and also the application of a drop of Esogetic Wildcrafted Herb Oil<sup>Relax</sup> at the points in the evening before bedtime, have been quite effective.

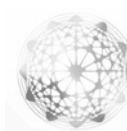
#### Treatment sequence for Colorpuncture:

1. Piezoelectric impulses
2. Colorpuncture – Complementary irradiation
  1. LR 1 .....Yellow/Violet
  2. LR 2 .....Yellow/Violet
  3. LR 3 .....Yellow/Violet
  4. UB 64 .....Red/Green
  5. TW 5 .....Red/Green

Acusiniatry: Spascupreel by Heel. I often combine this with Elhapargen.

Further remedies may be chosen according to the symptoms.

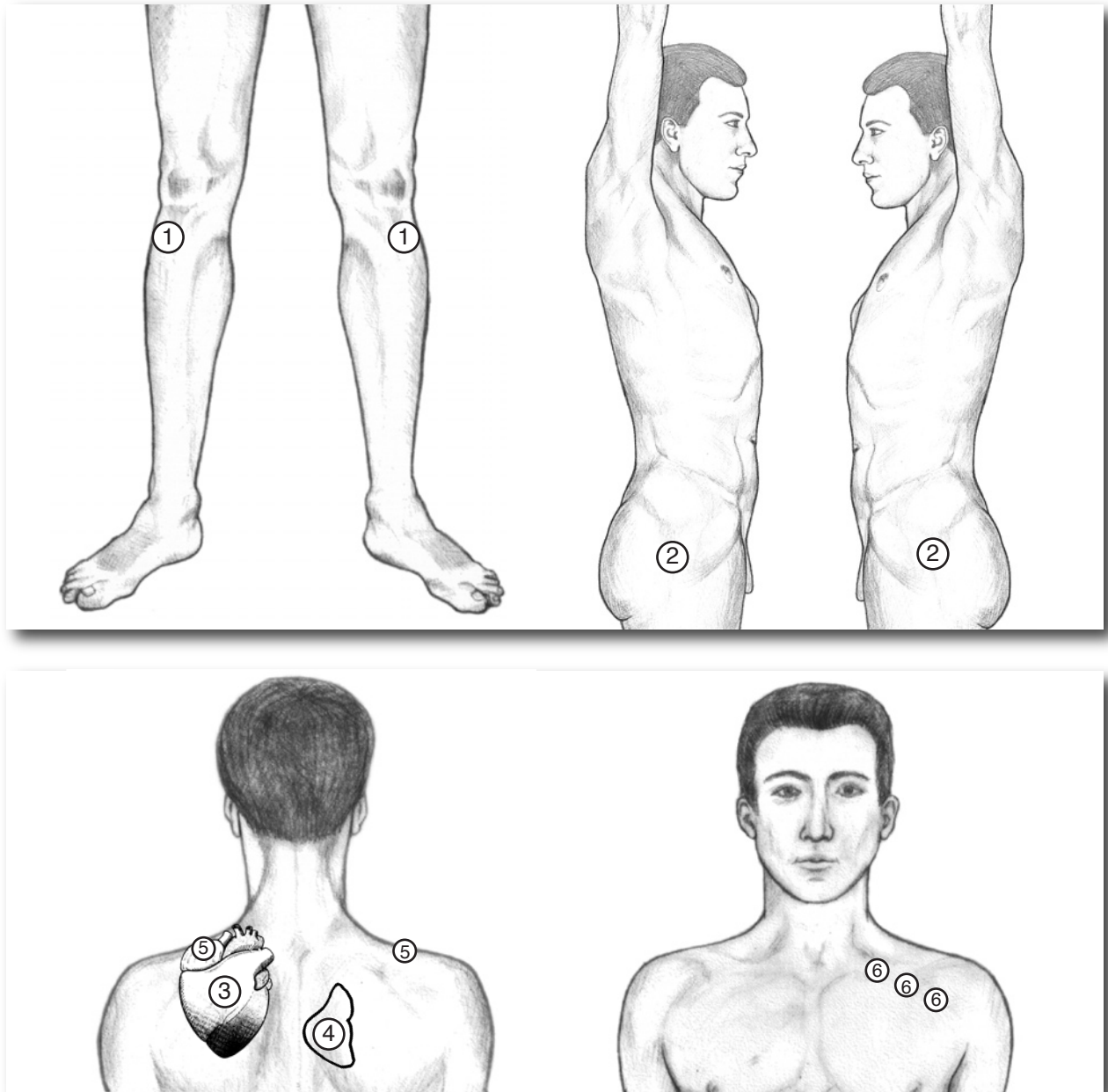
Afterwards I treat using the following combination.



## COMBINATIONS WITH ACUSINIATRY FOR CORRESPONDING SYMPTOMS

### Indications:

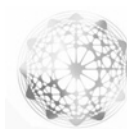
For angina pectoris, precordial anxiety, or even cardiac muscle spasms, I always start with the basic points for any spasm, regardless of location.



**Treatment sequence:**

1. Acupuncture/piezoelectric impulses
2. Colorpuncture
  - Point 1 – ST 36..... Blue/Orange
  - Point 2 – GB 30..... Red/Green
  - Point 3 – Heart segment, maximum point..... Blue or Orange
  - Point 4 – Liver segment, maximum point ..... Yellow
  - Point 5 – TW 15 ..... Blue/Orange
  - Point 6 – Angina pectoris line below the clavicle. The first point is located 1 FW from Kidney 27, directly below the clavicle. The second point is located 2 FW away from the first, and the third point is also 2 FW away from the second point. All points are particularly sensitive to pressure. .... Blue or Orange
3. Acusiniatry:

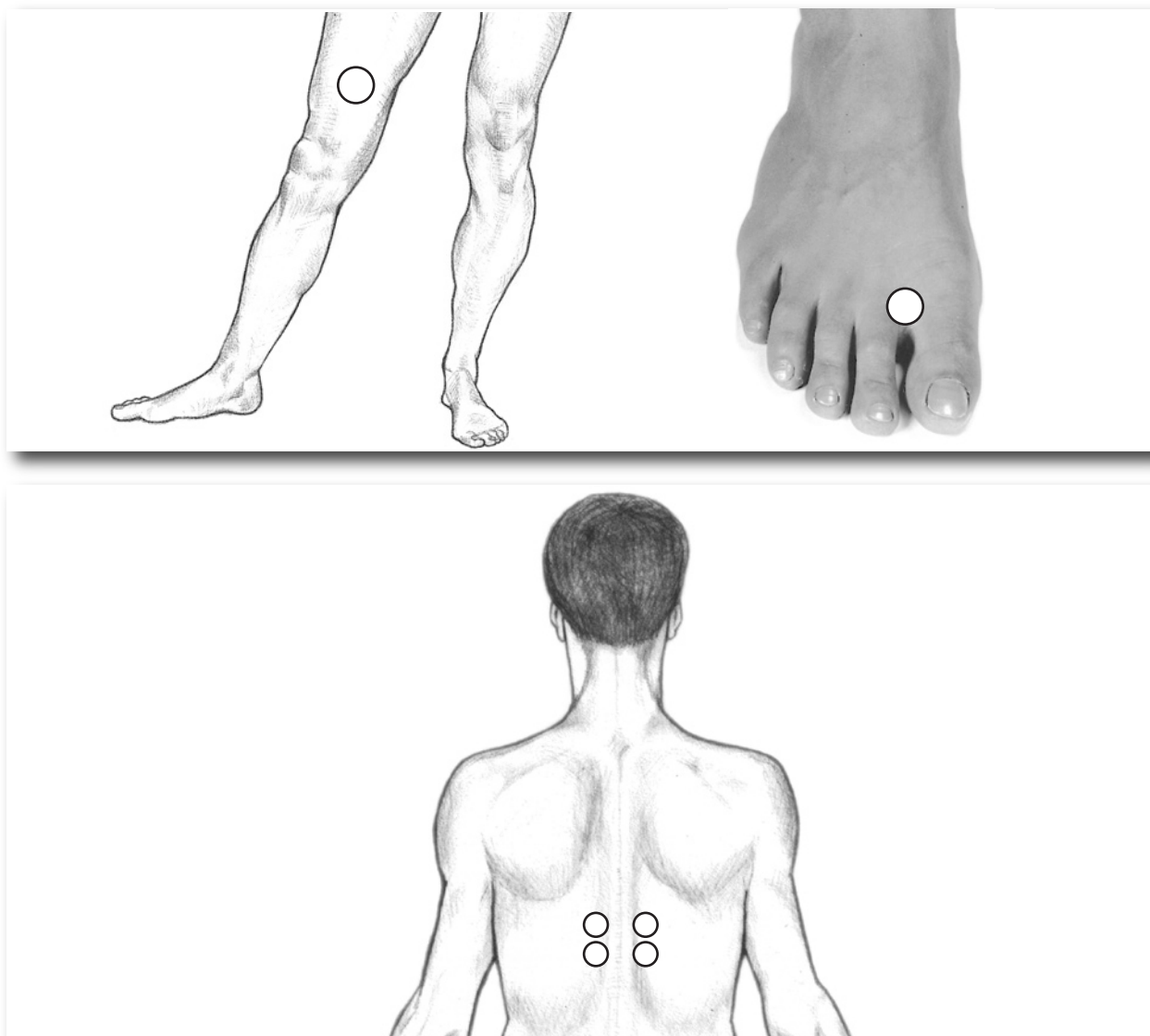
In relation to the heart, we use Infi Convallaria or Cor Loges, 0.2 per point in each case.



### Indication: Hemorrhoids, liver complaints, and portal vein congestion

There are many combinations with Colorpuncture in regard to liver treatment. With many people and regardless of the actual diseases, we are encountering more and more liver impediments today. That is why it is important to always include a liver protocol in the treatment concept.

After treating SP 4, the following treatment has proven effective for liver insufficiency:



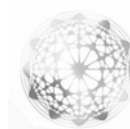
### Treatment sequence:

1. Acupuncture/piezoelectric impulses
2. Colorpuncture
 

Point 1 – LR 9 .....	Yellow/Violet
Point 2 – LR 2 .....	Yellow/Violet
Point 3 – UB 18.....	Yellow/Violet
Point 4 – UB 19.....	Yellow/Violet

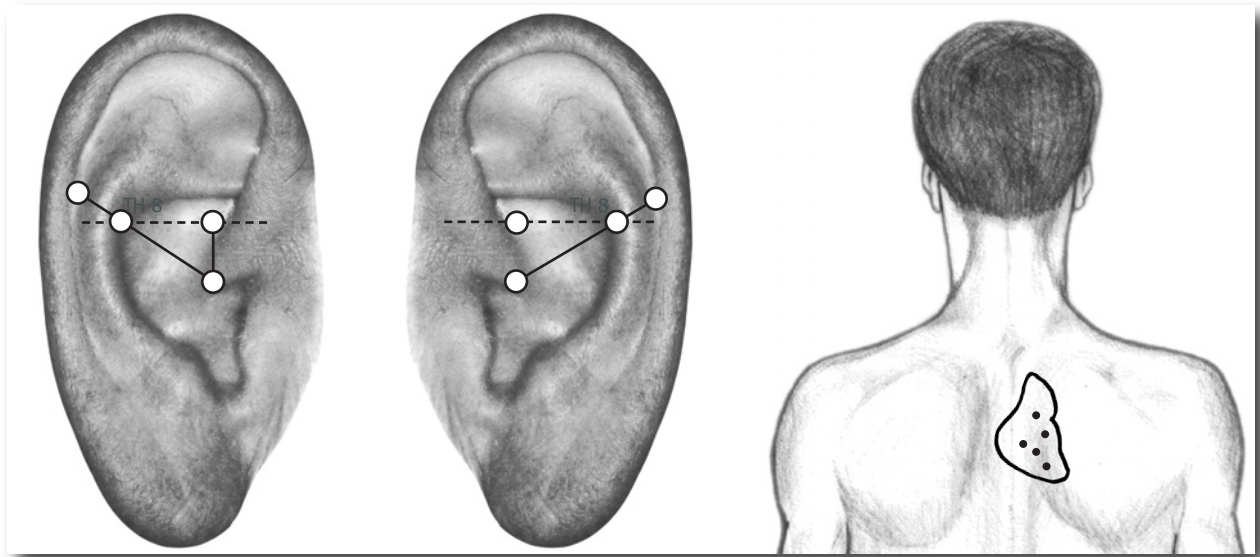
Acusiniatry: Infi Condurango 0.2 per point.

In combination with the information points of the ear and the liver segment, I do not perform acupuncture on these points, but instead administer 0.2 of the remedy Infi Condurango subcutaneously.





I then treat the information points on the ear and the liver segment.



We begin with the 2 x 4 points of ear acupuncture. These are:

1. The zero point according to Nogier
2. The omega point of ear acupuncture
3. If you draw a horizontal line from the omega point to the antihelix of the ear, you will approximately hit the TH 8 segment of the spine. The diagonal line from the zero point according to Nogier across this segment leads to the point in the autonomic groove according to Günter Lange.

We connect these four points with the palpation sensitive points within the liver segment. Here we usually find 3 to 5 painful points.

#### **Treatment sequence:**

1. Acupuncture/piezoelectric impulses
2. Colorpuncture
  - Point 1 – Ear points ..... UV (Turquoise)
  - Point 2 – Pain points of the liver segment ..... Lightgreen

The remedy for acusiniatry is "Infi-Condurango." After acupuncture, I mix the rest of the unit with Elhapargen and inject it subcutaneously into the previously identified points of the liver segment.

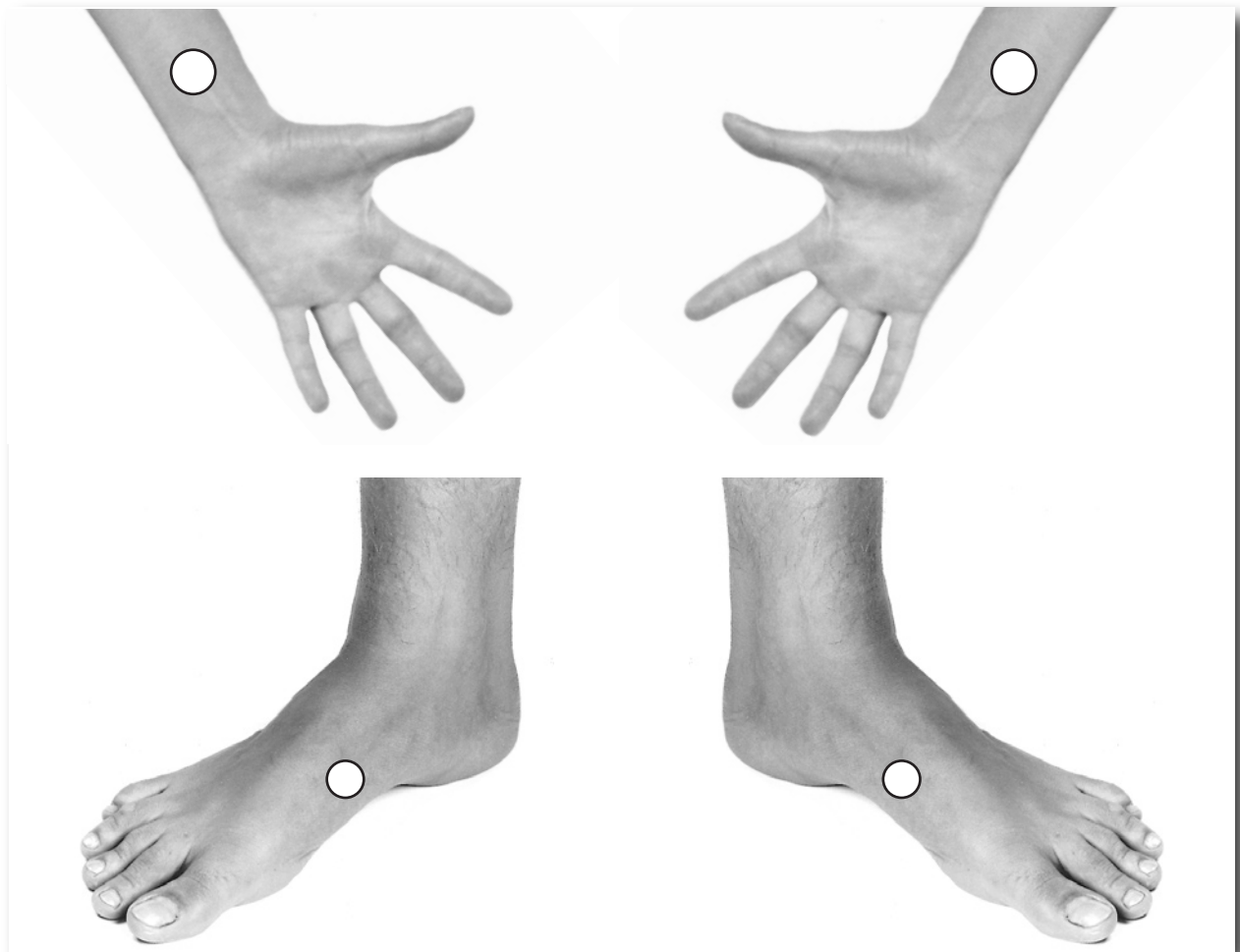


## COMBINATION OF PC 6 AND SP 4

Treatment with Colorpuncture and the Synapsis rhythms is very beneficial for this point.

It has been shown that the coupling of yin and yang, meaning PC 6 and SP 4, has a strengthening effect depending on the indication.

Below are the images and the treatment sequence.



### Treatment sequence Induction and color puncture:

1. Piezoelectric impulses
2. Induction/Colorpuncture
 

GV 20 .....	Gamma/UV
SP 4 left .....	Beta/Crimson
PC 6 right .....	Delta/Lightgreen
SP 4 right .....	Alpha/Turquoise
PC 6 left .....	Theta/Rose



**Use of the adapter:**

The Point-Combi program (Point-Gamma for stronger psychological indications) can also be applied to the combination PC 6 and SP 4.

In the next Esogetic Letter, I will deal with the master point TW 5.

Yours sincerely

A handwritten signature in black ink, appearing to read "Peter Mandel". The signature is fluid and cursive, with the first name "Peter" and last name "Mandel" clearly distinguishable.